

LITTERBOXES 101

Setting cats up for success!

1

LOCATION

Cats prefer a litterbox that is in a quiet area, away from their food and water. One box on each level of your home is best.



2

NUMBER

The general rule of thumb is one litterbox per cat in the household, plus one extra! Some cats prefer to not share a bathroom with their friends.



3

CLEANING

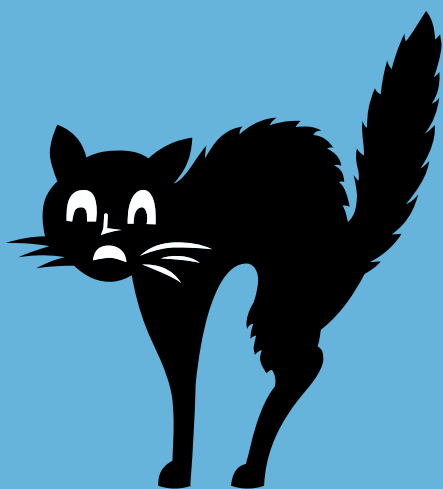
Some cats are more finicky than others, and may avoid a box that hasn't been recently cleaned!



4

STRESS

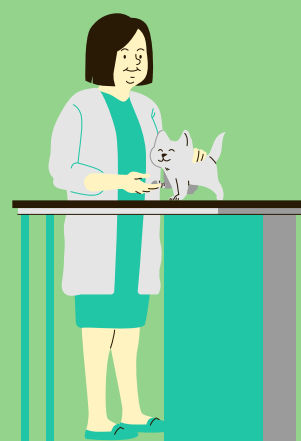
Stressful changes to the cat's environment, such as a new addition to the home, can cause house soiling. If you notice that your cat is having some inappropriate habits, consider what may be stressful to them.



5

TROUBLESHOOTING

If a cat that has previously used the litterbox begins having house soiling issues, take them to the vet! There could be an underlying medical issue causing the trouble.

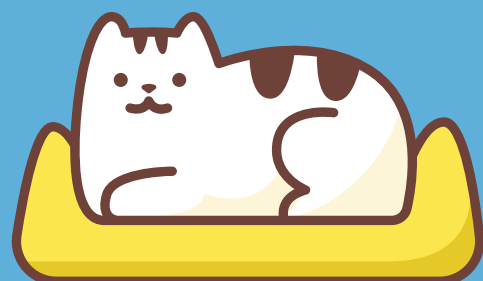


HELPING YOUR NEW CAT ADJUST

1

GIVE THEM SPACE

Don't expect your new friend to be ready to socialize right away. Changing environments can be difficult for a cat, and they may need a few weeks to observe.



2

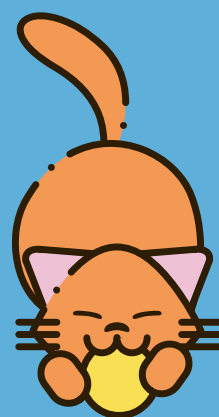
SET A ROUTINE

If your cat knows what to expect from you each day, they'll begin to feel more comfortable adding themselves into the routine.

3

FIND THEIR FAVORITES

Whether it's a special treat, a wand toy, or a good brushing, make a point to provide your cat's favorite activity every day.



4

START SMALL

Giving your new friend access to your whole house right at the beginning can be overwhelming. Start by acclimating them to one bedroom, and slowly open up more areas for them to explore.



5

KEEP THINGS CALM

As much as you might want to throw a party to welcome your new furry family member, hold off on any big events until a few weeks in.

