

EXPLANATION

COUNTY LINE

STUDY AREA BOUNDARY

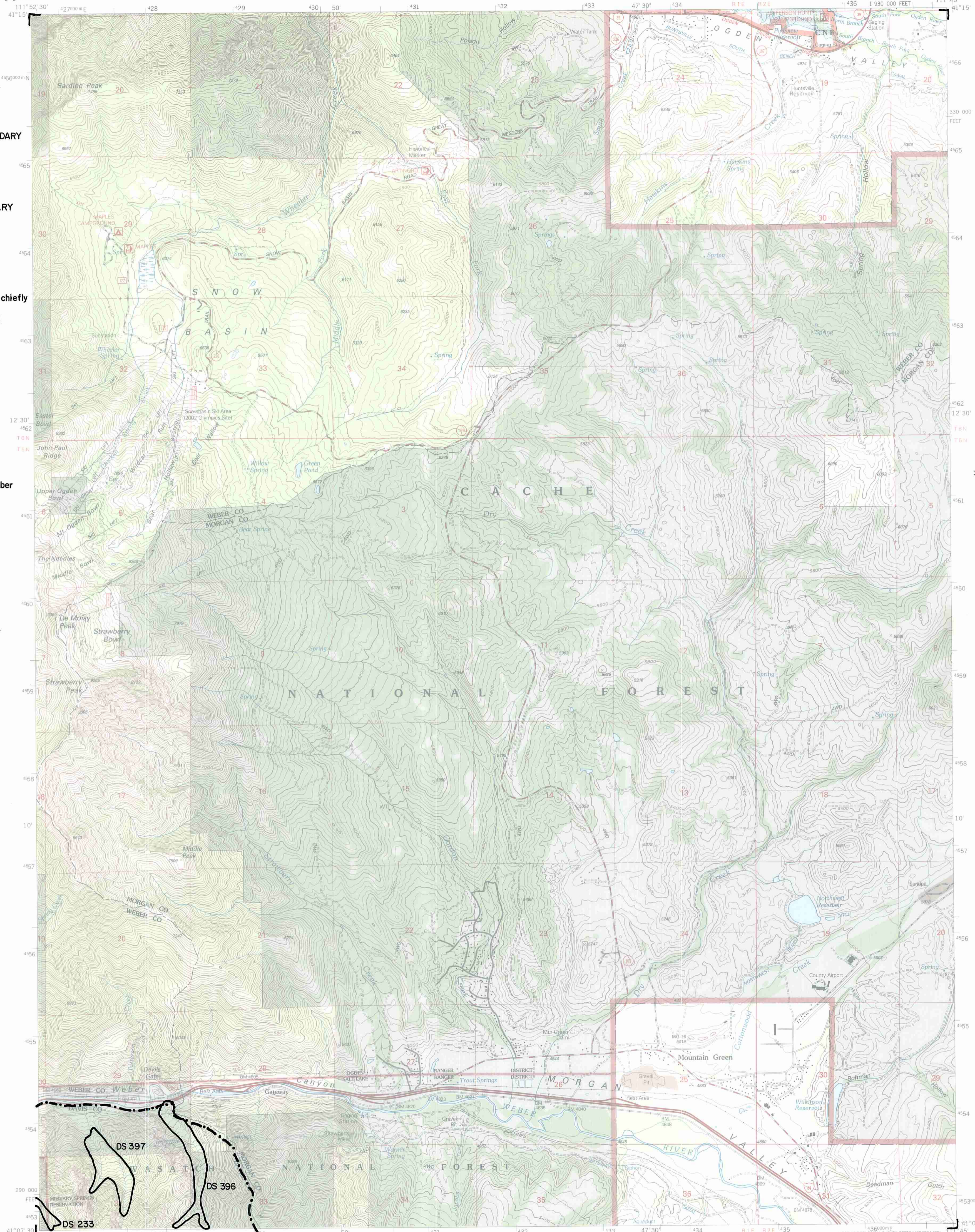
LANDSLIDE BOUNDARY

S=shallow failure, chiefly
debris slides grading
to debris flows.

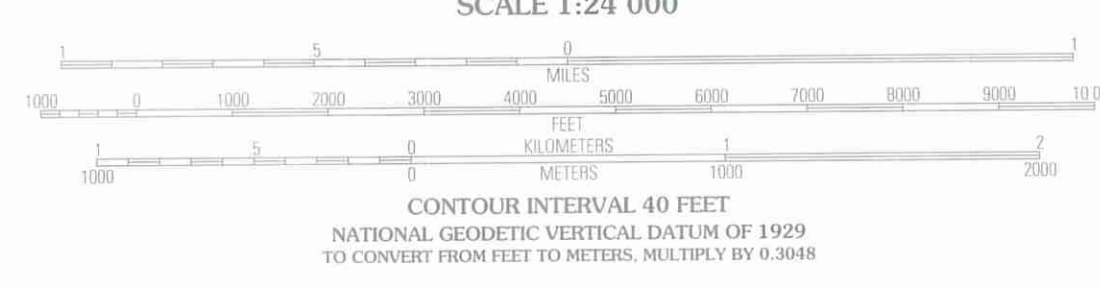
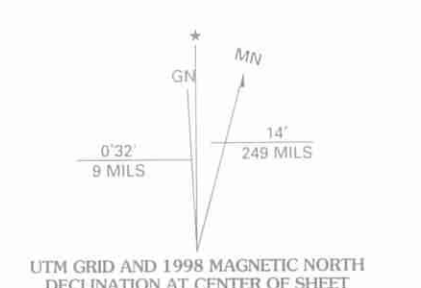
a=active (historic).

123=inventory number
for slope failure.

Slope failures
compiled from
original mapping
by
Olson, 1981,
by Mike Lowe,
Davis County
Geologist, 1989.



Produced by the United States Geological Survey 1992
Revision by USDA Forest Service 1998
Topography compiled 1954. Planimetry derived from imagery taken 1997
and other sources. Public Land Survey System and survey control current
as of 1998
North American Datum of 1927 (NAD 27). Projection and 10 000-foot ticks:
Utah coordinate system, north zone (Lambert conformal conic)
Blue 1000-meter Universal Transverse Mercator ticks, zone 12
North American Datum of 1983 (NAD 83) is shown by dashed corner ticks
The values of the shift between NAD 27 and NAD 83 for 7.5-minute
intersections are obtainable from National Geodetic Survey NADCON software
Non-National Forest System lands within the National Forest
Inholdings may exist in other National or State reservations
This map is not a legal land title or ownership document. Public lands are
subject to change and leasing, and may have access restrictions; check
with local offices. Obtain permission before entering private lands
Area covered by dashed light-blue pattern is subject to controlled inundation
to 4900 feet
Landmark buildings verified 2000



Interstate		Primary highway	
U. S.		Secondary highway	
State		Light-duty road	
County		Composition: Unspecified	
National Forest, suitable for passenger cars		Paved	
National Forest, suitable for high clearance vehicles		Gravel	
National Forest Trail		Dirt	
		Unimproved; 4 wheel drive	
		Trail	
		Gate; Barrier	

1	2	3	1 North Ogden
4	5		2 Huntsville
6	7	8	3 Browns Hole
			4 Ogden
			5 Durr Mountain
			6 Kayville
			7 Peterson
			8 Morgan

THIS MAP COMPLIES WITH NATIONAL MAP ACCURACY STANDARDS
FOR SALE BY U.S. GEOLOGICAL SURVEY, P.O. BOX 25286, DENVER, COLORADO 80225
A FOLDER DESCRIBING TOPOGRAPHIC MAPS AND SYMBOLS IS AVAILABLE ON REQUEST

SNOW BASIN, UT
1998
NIMA 3666 III N-SERIES V897

