

HOUSETRAINING 101

New dog, new skills!

1

DON'T ASSUME

Just because a dog was previously housetrained doesn't mean they won't make mistakes in their new home!



2

FREQUENCY

Start by taking your new dog out every 2-3 hours to set them up for success (puppies need more frequent opportunities!). Gradually increase the time between potty breaks.

3

SCHEDULE

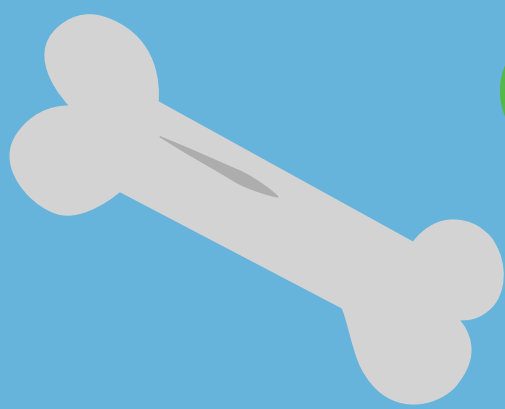
Keep your dog's meals on a regular schedule to better predict when they'll need to go outside. Letting them outside on a schedule can also help them!



4

REINFORCEMENT

When your dog goes potty in the right area, give them a treat and lots of praise. This encourages them to do the right behavior again!



5

ACCIDENTS HAPPEN!

Never punish your dog for making a mistake. This only teaches the dog to choose a different room where you can't find them.

POSITIVE
VIBES

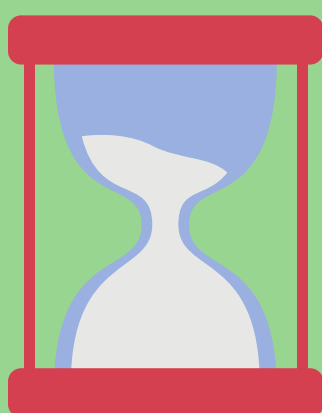


CRATE TRAINING 101

New dog, new skills!

1 MAKE IT APPEALING

Encourage your dog to go into his crate with treats and toys. Toss a treat in, let him go in and retrieve it, then walk back out. Repeat!



2 TAKE IT SLOW

Forcing your dog to stay in a crate without helping him adjust will associate bad feelings with the crate! Start with short periods of crate time and slowly increase.

3 LEAVE IT OPEN

Don't close the crate when it's not in use - leave it open and allow the dog to choose to go inside if they would like to!



4 KEEP 'EM BUSY

Give your dog something fun to do that they only get to do while they're in the crate! Whether it's a bone, lick mat, etc. make it a special treat that they look forward to.



5 NOT PUNISHMENT

Again, we only want to associate positive experiences with the crate. Never use the crate as a form of punishment, or your dog will begin to fear having to be crated.

**GOOD
VIBES**

