



U.S. DEPARTMENT OF THE INTERIOR  
U.S. GEOLOGICAL SURVEY



U.S. DEPARTMENT OF AGRICULTURE  
FOREST SERVICE

FARMINGTON QUADRANGLE  
UTAH  
7.5-MINUTE SERIES (TOPOGRAPHIC)

SLOPE-FAILURE INVENTORY MAP - FARMINGTON QUADRANGLE

EXPLANATION

LANDSLIDE BOUNDARY

= rock slide,  
rockfall area

= shallow failure,  
chiefly debris slides  
leading to debris flows

F= debris flows, gradational  
with debris slides

S= deep failure, chiefly

lumps and earthflows

P=lateral spread

= active (historic)

= inactive, young

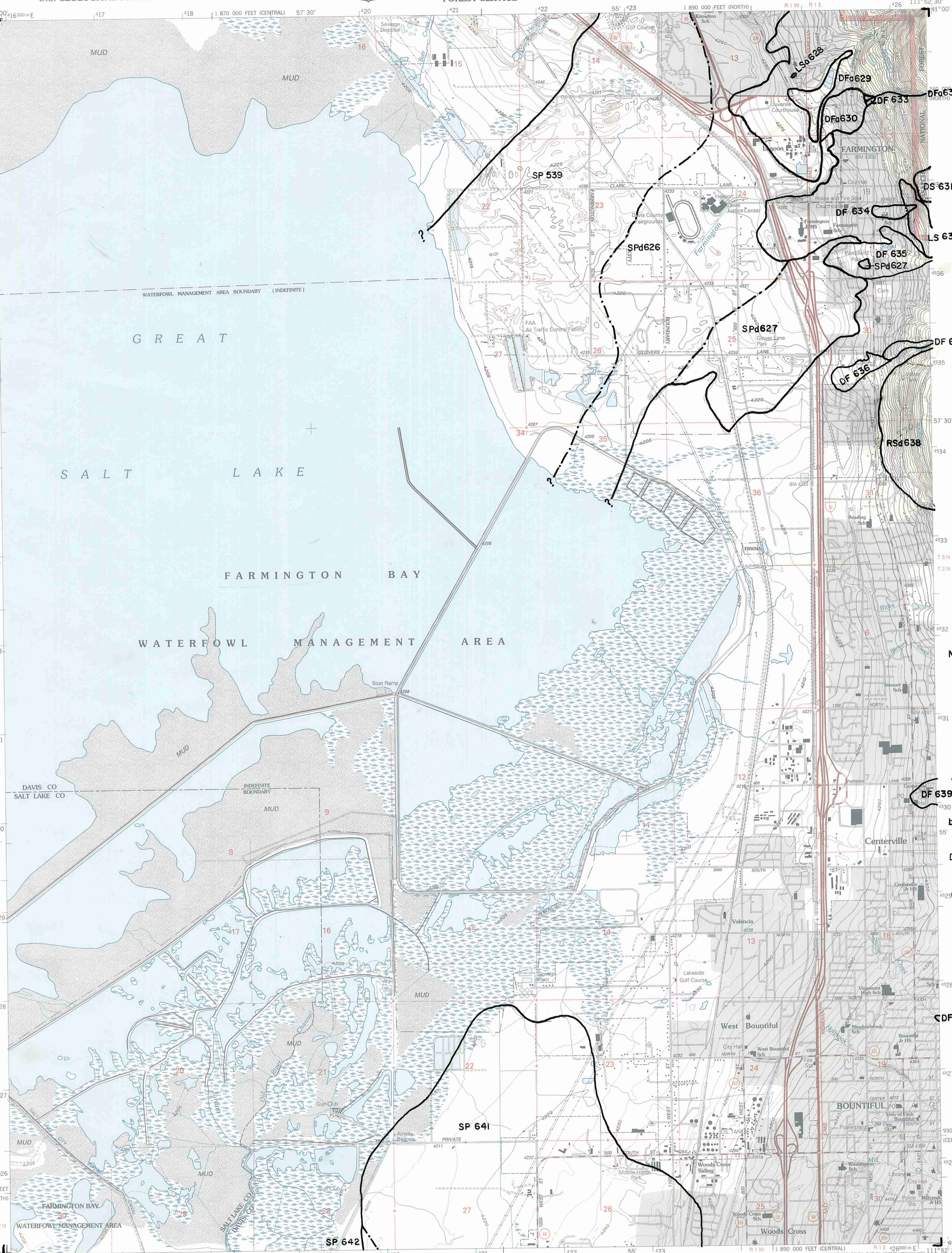
= inactive, mature

= inactive, old

23=inventory number

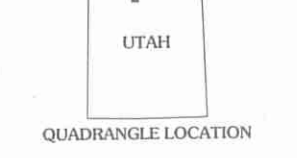
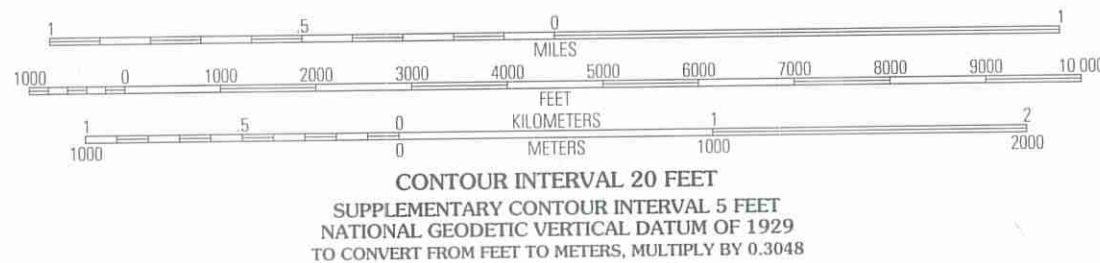
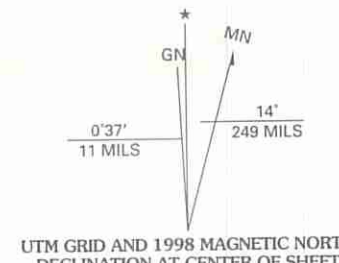
for slope failure

Slope failures  
compiled from  
original mapping  
by  
Anderson and  
others, 1982;  
Kaiser, 1983;  
Keaton, 1986;  
Nelson and Personius,  
in preparation;  
Olson, 1981;  
and  
Van Horn, 1973,  
by Mike Lowe,  
Davis County  
Geologist, 1989.



SCALE 1:24 000

Produced by the United States Geological Survey 1975  
Revision by USDA Forest Service 1998  
Topography compiled 1926. Planimetry derived from imagery taken 1997  
and other sources. Public Land Survey System and survey control current  
as of 1998  
North American Datum of 1927 (NAD 27). Projection: Utah  
coordinate system, north zone (Lambert conformal conic)  
10 000-foot ticks: Utah coordinate system north and central zones  
Blue 1000-meter Universal Transverse Mercator ticks, zone 12  
North American Datum of 1983 (NAD 83) is shown by dashed corner ticks  
The values of the shift between NAD 27 and NAD 83 for 7.5-minute  
intersections are obtainable from National Geodetic Survey NADCON software  
Non-National Forest System lands within the National Forest  
Inholdings may exist in other National or State reservations  
This map is not a legal land line or ownership document. Public lands are  
subject to change and leasing, and may have access restrictions; check  
with local offices. Obtain permission before entering private lands  
Landmark buildings verified 2000



1	2	3	1 Clearfield
2	3	4	2 Rayville
3	4	5	3 Peterson
4	5	6	4 Saltair NE
5	6	7	5 Bountiful Peak
6	7	8	6 Saltair
7	8		7 Salt Lake City North
8			8 Fort Douglas

Interstate .....  
U. S. .....  
State .....  
County .....  
National Forest, suitable  
for passenger cars .....  
National Forest, suitable for  
high clearance vehicles .....  
National Forest Trail .....  
Primary highway .....  
Secondary highway .....  
Light-duty road .....  
Composition: Unspecified .....  
Paved .....  
Gravel .....  
Dir. ....  
Unimproved; 4 wheel drive .....  
Trail .....  
Gate; barrier .....  
UTAH  
QUADRANGLE LOCATION  
FARMINGTON, UT  
1998  
NIMA 3665 IV NW-SERIES V897

THIS MAP COMPLIES WITH NATIONAL MAP ACCURACY STANDARDS  
FOR SALE BY U.S. GEOLOGICAL SURVEY, P.O. BOX 25286, DENVER, COLORADO 80225  
A FOLDER DESCRIBING TOPOGRAPHIC MAPS AND SYMBOLS IS AVAILABLE ON REQUEST

