

SLOPE-FAILURE INVENTORY MAP - OGDEN QUADRANGLE

UNITED STATES DEPARTMENT OF THE INTERIOR GEOLOGICAL SURVEY

UNITED STATES DEPARTMENT OF THE ARMY CORPS OF ENGINEERS

OGDEN QUADRANGLE UTAH 7.5 MINUTE SERIES (TOPOGRAPHIC)

EXPLANATION

COUNTY LINE

LANDSLIDE BOUNDARY

RS=rock slide, rockfall area

DS=shallow failure, chiefly debris slides grading to debris flows

DF=debris flows, gradation with debris slides

LS=deep failure, chiefly slumps and earthflows

CX=complex area of more than one failure type

SP=lateral spread

?=failure mode uncertain

a=active (historic)

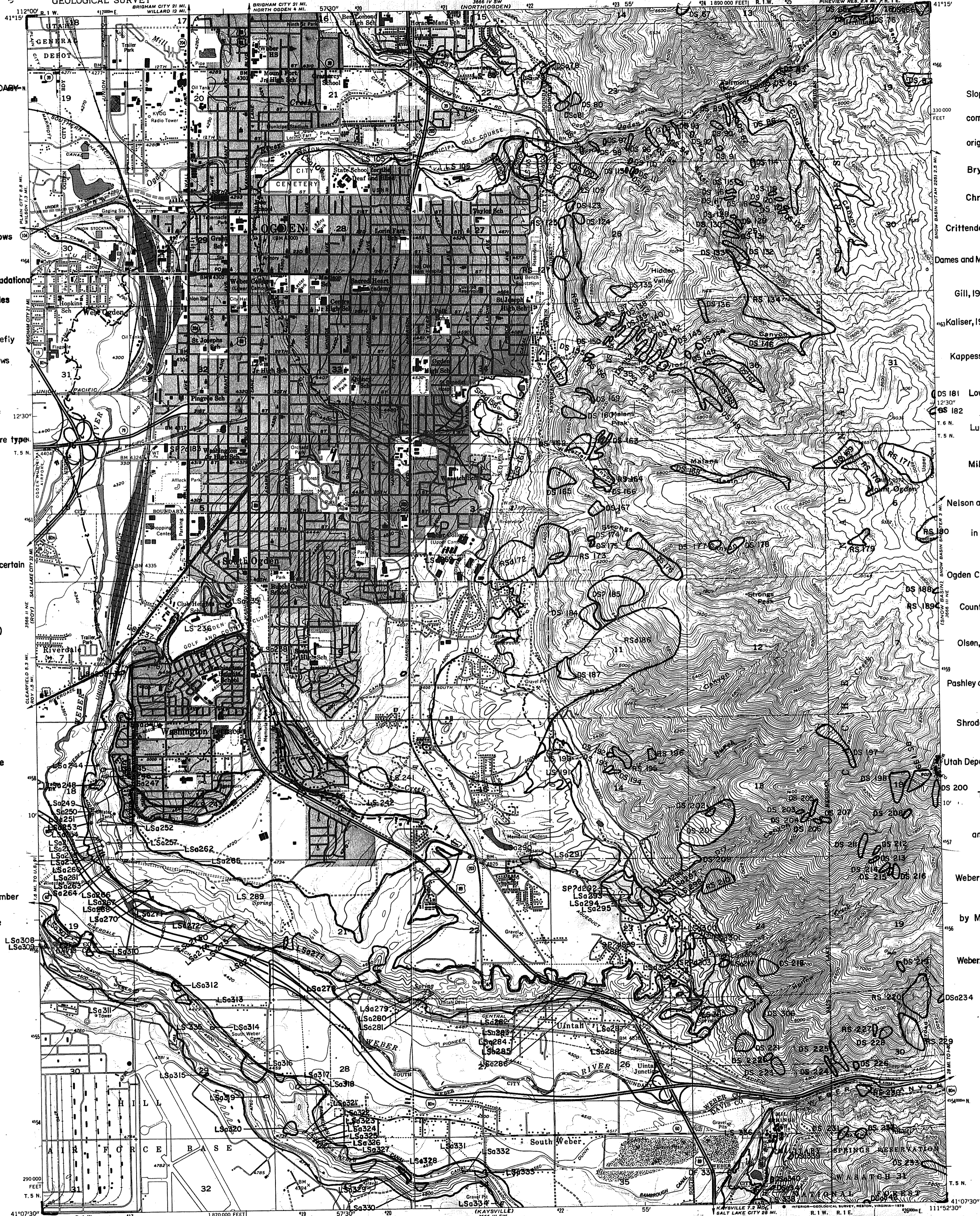
b=inactive, young

c=inactive, mature

d=inactive, old

123=inventory number for slope failure

Slope failures compiled from original mapping by Bryant, 1984; Christenson, 1985; Crittenden and Sorensen, 1985; Dames and Moore, 1980, 1984, 1985; Gill, 1981, 1982; Kaliser, 1969, 1973, 1976, 1984; Kappesser, unpublished; DS 181 Lowe, unpublished; DS 182 Lund, 1980; Miller, 1980; Nelson and Personius, in preparation; Ogden City and Weber County, 1985; Olsen, 1976, 1981; Pashley and Wiggins, 1972; Shroder, 1971; Utah Department of Transportation, 1972; and Weber County, 1981, by Mike Lowe, Weber/Davis Counties Geologist, 1988.



Mapped, edited, and published by the Geological Survey

Control by USGS and NOS/NOAA

Topography from aerial photographs by multiplex methods and from planimetric surveys 1926. Aerial photographs taken 1953 and 1954. Field check 1955

Polycyclic projection. 1927 North American datum 10,000-foot grid based on Utah coordinate system, north zone

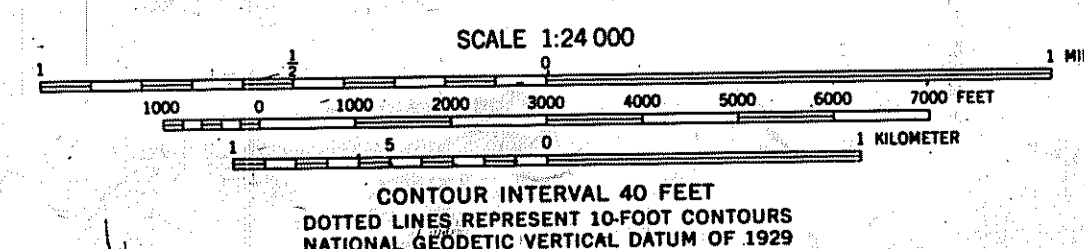
Red tint indicates areas in which only landmark buildings are shown

Dashed land lines indicate approximate locations

1000-meter Universal Transverse Mercator grid ticks, zone 12, shown in blue

Revisions shown in purple compiled from aerial photographs taken 1969 and 1975. This information not field checked

Purple tint indicates extension of urban areas



ROAD CLASSIFICATION

Heavy-duty, Light-duty, Medium-duty, Unimproved dirt, Interstate Route, U.S. Route, State Route

OGDEN, UTAH N4107.5-W1152.5/7.5

1955 PHOTOREVISED 1969 AND 1975 AMS 3688 III NW-SERIES 1987

THIS MAP COMPLIES WITH NATIONAL MAP ACCURACY STANDARDS FOR SALE BY U.S. GEOLOGICAL SURVEY, DENVER, COLORADO 80225, OR RESTON, VIRGINIA 22092 A FOLDER DESCRIBING TOPOGRAPHIC MAPS AND SYMBOLS IS AVAILABLE ON REQUEST