

POTENTIAL SURFACE-FAULT RUPTURE SENSITIVE AREA OVERLAY ZONE - FORT DOUGLAS QUADRANGLE



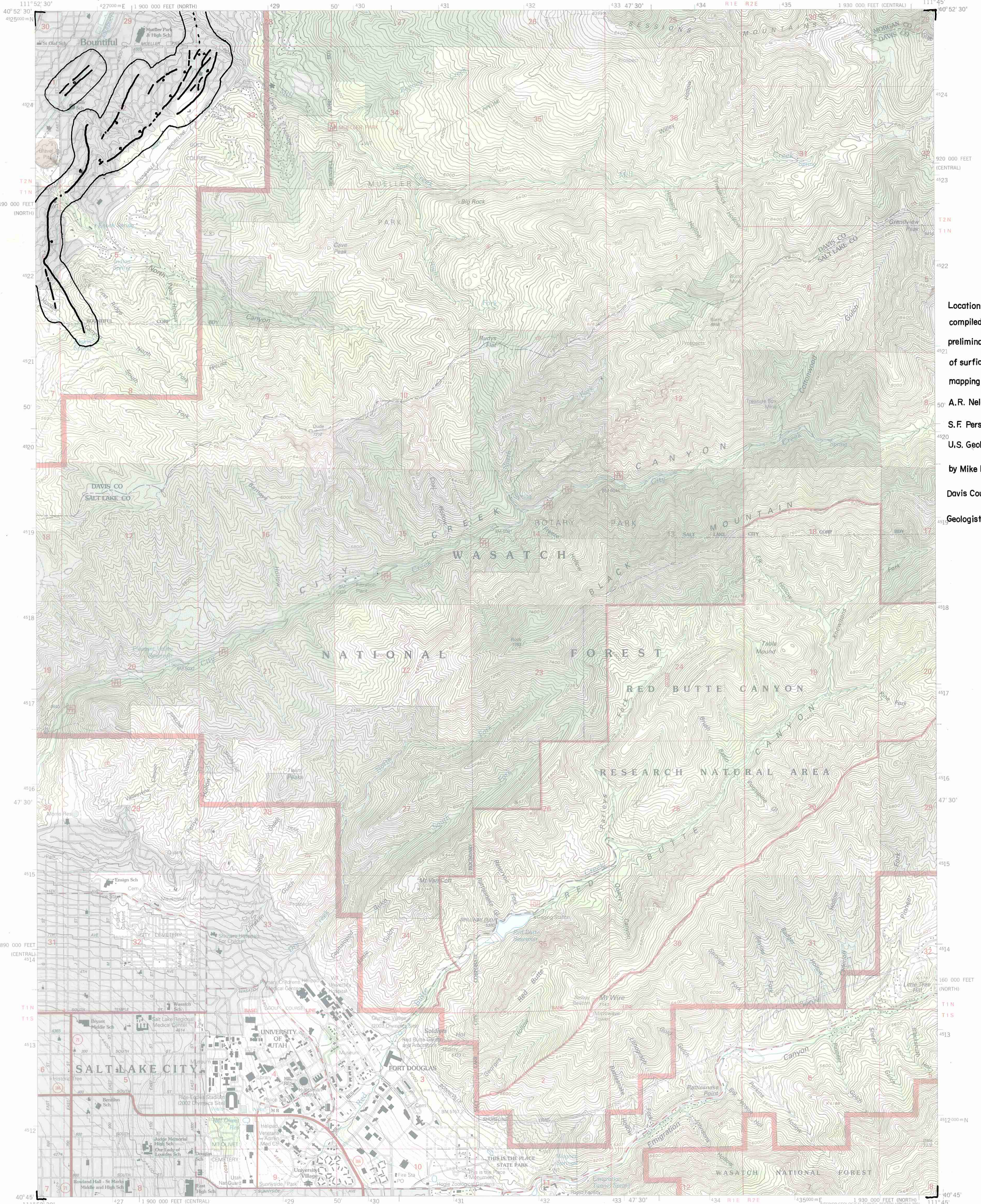
U.S. DEPARTMENT OF THE INTERIOR
U.S. GEOLOGICAL SURVEY

EXPLANATION

FAULT - - ball on down-dropped side
SENSITIVE AREA BOUNDARY -

U.S. DEPARTMENT OF AGRICULTURE
FOREST SERVICE

FORT DOUGLAS QUADRANGLE
UTAH
7.5-MINUTE SERIES (TOPOGRAPHIC)



Location of faults compiled from preliminary drafts of surficial geologic mapping by A.R. Nelson and S.F. Personius, U.S. Geological Survey, by Mike Lowe, Davis County Geologist, 1989.

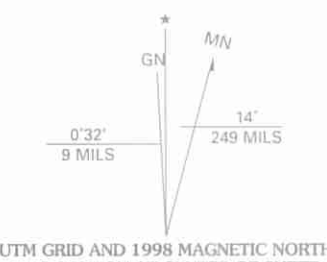
Produced by the United States Geological Survey 1975
Revision by USDA Forest Service 1998

Topography compiled 1950. Planimetry derived from imagery taken 1997 and other sources. Public Land Survey System and survey control current as of 1998

North American Datum of 1927 (NAD 27). Projection: Utah coordinate system, central zone (Lambert conformal conic) 10 000-foot ticks; Utah coordinate system central and north zones Blue 1000-meter Universal Transverse Mercator ticks, zone 12

North American Datum of 1983 (NAD 83) is shown by dashed corner ticks The values of the shift between NAD 27 and NAD 83 for 7.5-minute intersections are obtainable from National Geodetic Survey NADCON software

Non-National Forest System lands within the National Forest Inholdings may exist in other National or State reservations This map is not a legal land line or ownership document. Public lands are subject to change and leasing, and may have access restrictions; check with local offices. Obtain permission before entering private lands Landmark buildings verified 2000



SCALE 1:24 000
CONTOUR INTERVAL 40 FEET
SUPPLEMENTARY CONTOUR INTERVAL 10 FEET
NATIONAL GEODETIC VERTICAL DATUM OF 1929
TO CONVERT FROM FEET TO METERS, MULTIPLY BY 0.3048

THIS MAP COMPLIES WITH NATIONAL MAP ACCURACY STANDARDS
FOR SALE BY U.S. GEOLOGICAL SURVEY, P.O. BOX 25286, DENVER, COLORADO 80225
A FOLDER DESCRIBING TOPOGRAPHIC MAPS AND SYMBOLS IS AVAILABLE ON REQUEST



HIGHWAYS AND ROADS

Interstate		Primary highway	
U.S.		Secondary highway	
State		Light-duty road	
County		Composition: Unspecified	
National Forest, suitable for passenger cars		Paved	
National Forest, suitable for high clearance vehicles		Gravel	
National Forest Trail		Dirt	
		Unimproved; 4 wheel drive	
		Trail	
		Gate; Barrier	

1	2	3	1 Farmington
4	5	6	2 Bountiful Peak
6	7	8	3 Porterville
			4 Salt Lake City North
			5 Mountain Dell
			6 Salt Lake City South
			7 Sugar House
			8 Mount Aire

ADJOINING 7.5' QUADRANGLES

FORT DOUGLAS, UT
1998
NIMA 3665 IV SE-SERIES V897

