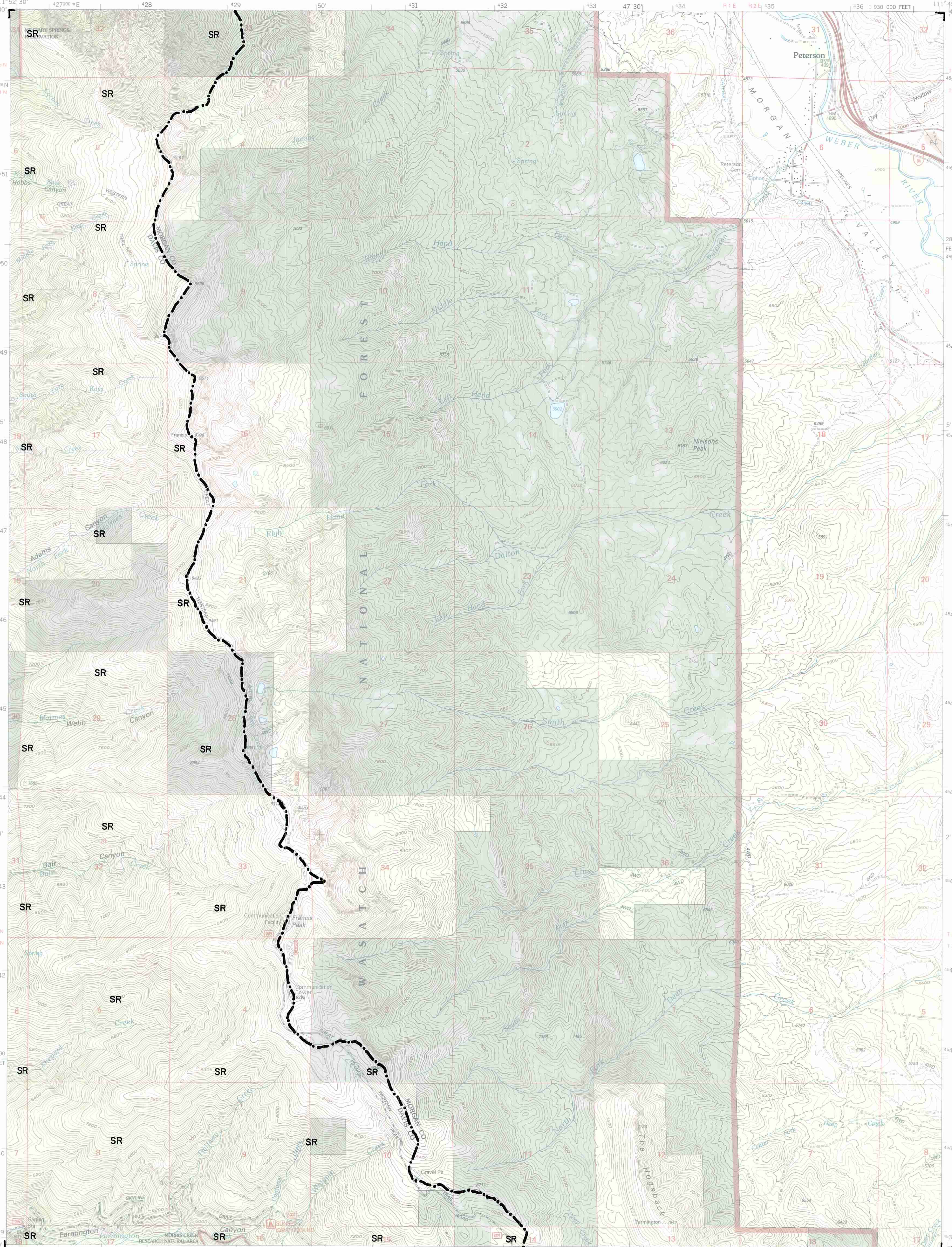


EXPLANATION

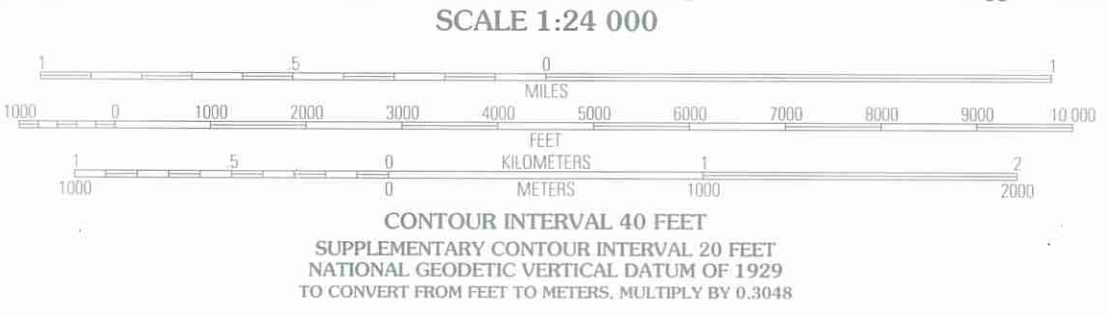
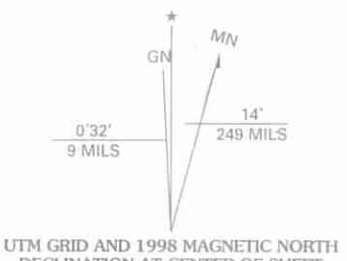
**LANDSLIDE-HAZARD
BOUNDARY AND
COUNTY LINE**

SR=area where
landslide-hazard
special studies
are recommended.

Landslide-hazard
boundary compiled
from slope and
existing landslides
by Mike Lowe,
Davis County
Geologist, 1989.
For locations of
prehistoric and
historic landslides,
see Slope-Failure
Inventory Map -
Peterson Quadrangle.



Produced by the United States Geological Survey 1991
Revision by USDA Forest Service 1998
Topography compiled 1953. Planimetry derived from imagery taken 1997
and other sources. Public Land Survey System and survey control current
as of 1998.
North American Datum of 1927 (NAD 27). Projection and 10 000-foot ticks:
Utah coordinate system, north zone (Lambert conformal conic)
Blue 1000-meter Universal Transverse Mercator ticks, zone 12
North American Datum of 1983 (NAD 83) is shown by dashed corner ticks
The values of the shift between NAD 27 and NAD 83 for 7.5-minute
intersections are obtainable from National Geodetic Survey NADCON software
Non-National Forest System lands within the National Forest
Inholdings may exist in other National or State reservations
This map is not a legal land line or ownership document. Public lands are
subject to change and leasing, and may have access restrictions; check
with local offices. Obtain permission before entering private lands



1	2	3	1 Ogden
4	5		2 Snow Basin
6	7	8	3 Durr Mountain
			4 Kayville
			5 Morgan
			6 Farmington
			7 Bonifield Peak
			8 Poreville
			9 Farmington

ADJOINING 7.5 QUADRANGLES

HIGHWAYS AND ROADS

Interstate	Primary highway
U. S.	Secondary highway
State	Light-duty road
County	Composition: Unspecified
National Forest, suitable for passenger cars	Paved
National Forest, suitable for high clearance vehicles	Gravel
National Forest Trail	Dirt
	Unimproved; 4 wheel drive
	Trail
	Gate; Barrier

THIS MAP COMPLIES WITH NATIONAL MAP ACCURACY STANDARDS
FOR SALE BY U.S. GEOLOGICAL SURVEY, P.O. BOX 25286, DENVER, COLORADO 80225
A FOLDER DESCRIBING TOPOGRAPHIC MAPS AND SYMBOLS IS AVAILABLE ON REQUEST

PETERSON, UT
1998
NIMA 3666 III SE-SERIES V897

