



U.S. DEPARTMENT OF THE INTERIOR
U.S. GEOLOGICAL SURVEY



U.S. DEPARTMENT OF AGRICULTURE
FOREST SERVICE

FARMINGTON QUADRANGLE
UTAH
7.5-MINUTE SERIES (TOPOGRAPHIC)

SLOPE-FAILURE INVENTORY MAP - FARMINGTON QUADRANGLE

EXPLANATION

LANDSLIDE BOUNDARY

= rock slide,
rockfall area

= shallow failure,
chiefly debris slides
leading to debris flows

F= debris flows, gradational
with debris slides

S= deep failure, chiefly

lumps and earthflows

P=lateral spread

= active (historic)

= inactive, young

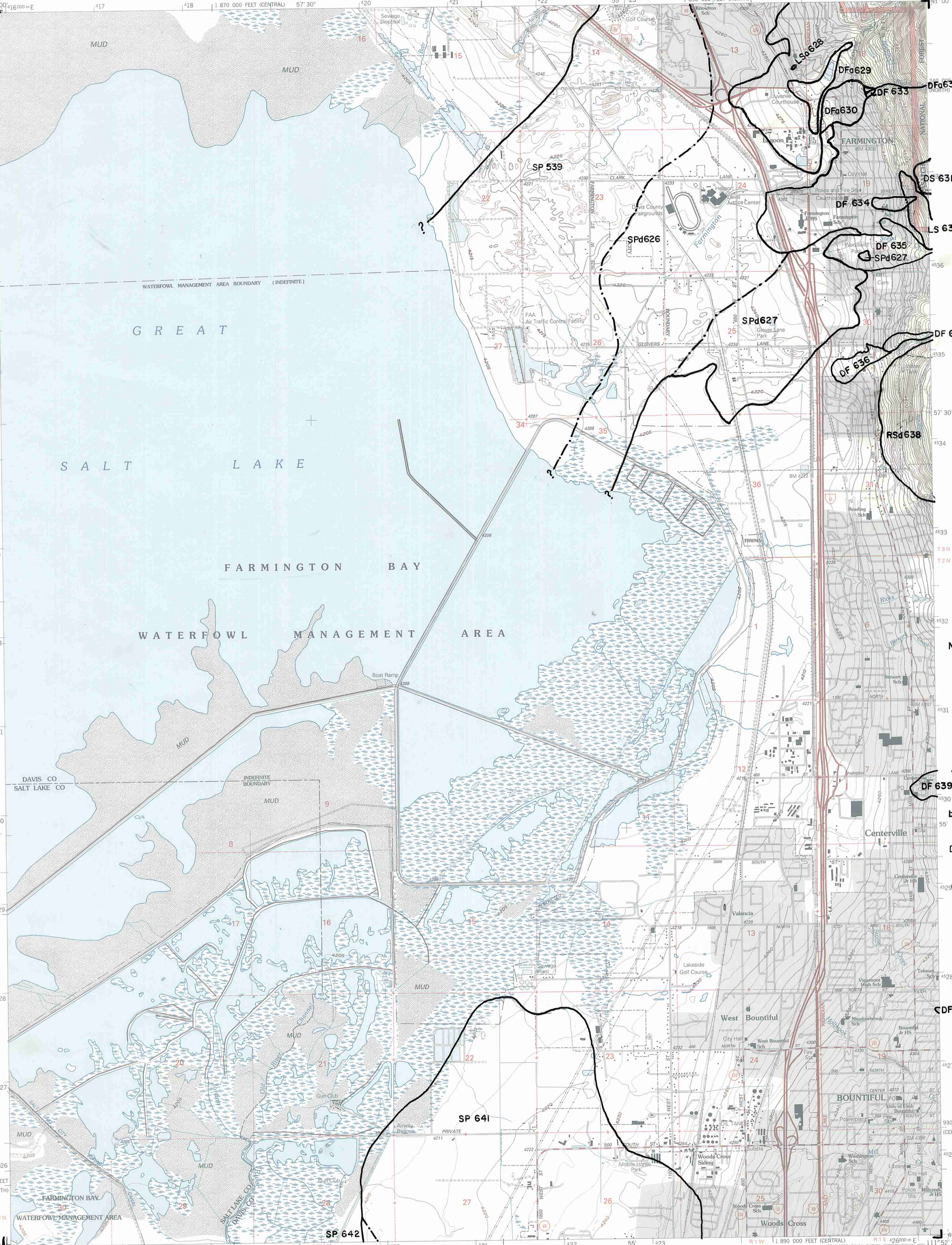
= inactive, mature

= inactive, old

23=inventory number

for slope failure

Slope failures
compiled from
original mapping
by
Anderson and
others, 1982;
Kaiser, 1983;
Keaton, 1986;
Nelson and Personius,
in preparation;
Olson, 1981;
and
Van Horn, 1973,
by Mike Lowe,
Davis County
Geologist, 1989.



SCALE 1:24 000

Produced by the United States Geological Survey 1975
Revision by USDA Forest Service 1998

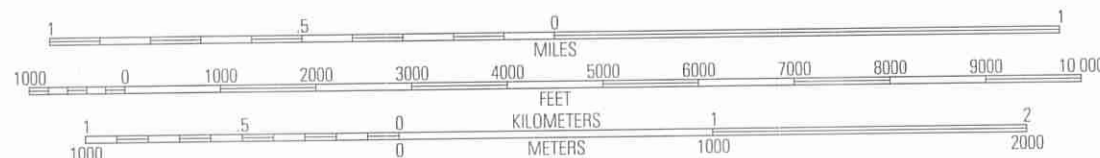
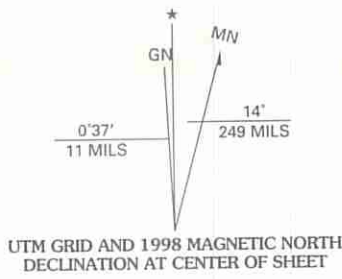
Topography compiled 1926. Planimetry derived from imagery taken 1997
and other sources. Public Land Survey System and survey control current
as of 1998

North American Datum of 1927 (NAD 27). Projection: Utah
coordinate system, north zone (Lambert conformal conic)
10 000-foot ticks: Utah coordinate system north and central zones
Blue 1000-meter Universal Transverse Mercator ticks, zone 12

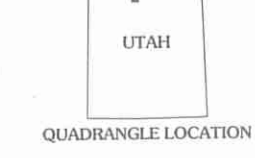
North American Datum of 1983 (NAD 83) is shown by dashed corner ticks
The values of the shift between NAD 27 and NAD 83 for 7.5-minute
intersections are obtainable from National Geodetic Survey NADCON software

Non-National Forest System lands within the National Forest
Inholdings may exist in other National or State reservations

This map is not a legal land line or ownership document. Public lands are
subject to change and leasing, and may have access restrictions; check
with local offices. Obtain permission before entering private lands
Landmark buildings verified 2000



CONTOUR INTERVAL 20 FEET
SUPPLEMENTARY CONTOUR INTERVAL 5 FEET
NATIONAL GEODETIC VERTICAL DATUM OF 1929
TO CONVERT FROM FEET TO METERS, MULTIPLY BY 0.3048



1	2	3	1 Clearfield
2	3	4	2 Rayville
3	4	5	3 Peterson
4	5	6	4 Saltair NE
5	6	7	5 Bountiful Peak
6	7	8	6 Saltair
7	8		7 Salt Lake City North
8			8 Fort Douglas

Interstate	Primary highway
U. S. ...	Secondary highway
State ...	Light-duty road
County ...	Composition: Unspecified
National Forest, suitable for passenger cars	Paved
National Forest, suitable for high clearance vehicles	Gravel
National Forest Trail	Dir.
	Unimproved; 4 wheel drive
	Trail
	Gate; barrier

FARMINGTON, UT
1998
NIMA 3665 IV NW-SERIES V897

THIS MAP COMPLIES WITH NATIONAL MAP ACCURACY STANDARDS
FOR SALE BY U.S. GEOLOGICAL SURVEY, P.O. BOX 25286, DENVER, COLORADO 80225
A FOLDER DESCRIBING TOPOGRAPHIC MAPS AND SYMBOLS IS AVAILABLE ON REQUEST

