

SLOPE-FAILURE INVENTORY MAP - OGDEN QUADRANGLE

OGDEN QUADRANGLE
UTAH
7.5 MINUTE SERIES (TOPOGRAPHIC)

UNITED STATES
DEPARTMENT OF THE INTERIOR
GEOLOGICAL SURVEY

UNITED STATES
DEPARTMENT OF THE ARMY
CORPS OF ENGINEERS

EXPLANATION

COUNTY LINE

LANDSLIDE BOUNDARY

RS=rock slide,
rockfall area

DS=shallow failure,
chiefly debris slides
grading to debris flows

DF=debris flows, gradation
with debris slides

LS=deep failure, chiefly
slumps and earthflows

CX=complex area of
more than one failure type

SP=lateral spread

?=failure mode uncertain

a=active (historic)

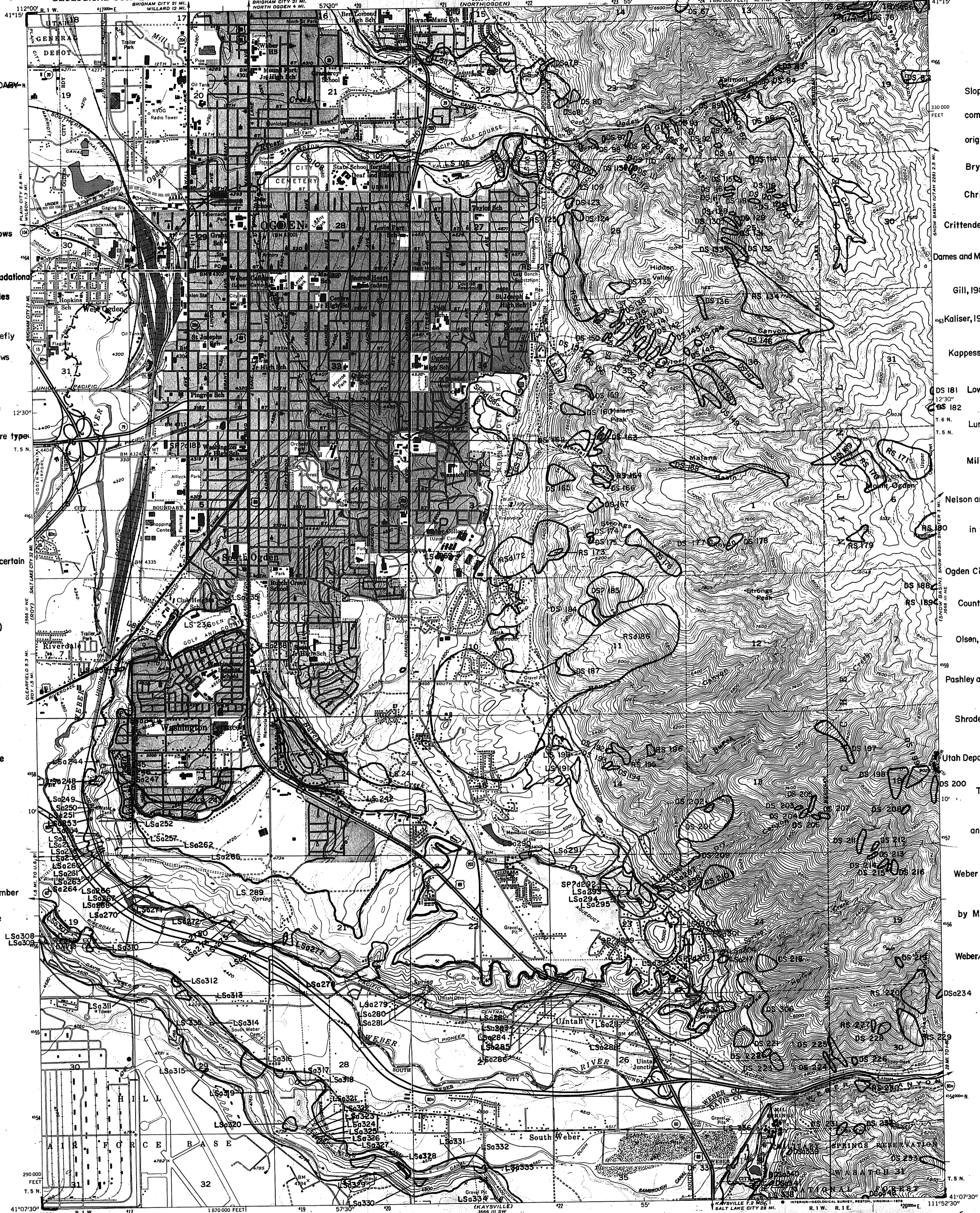
b=inactive, young

c=inactive, mature

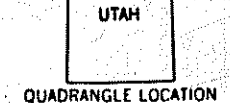
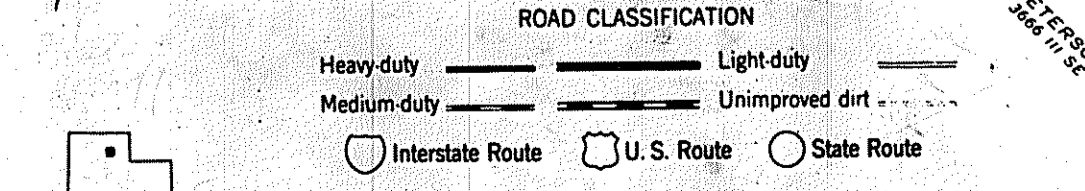
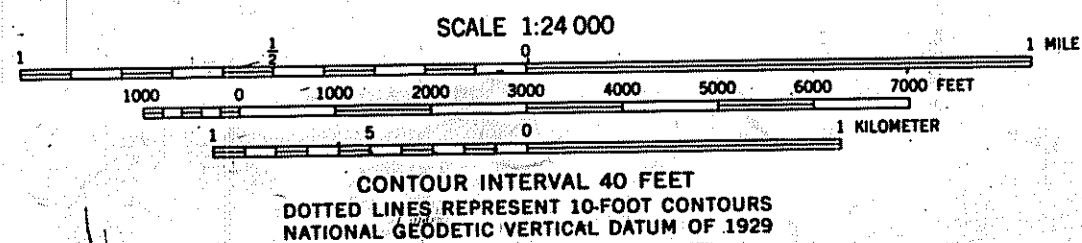
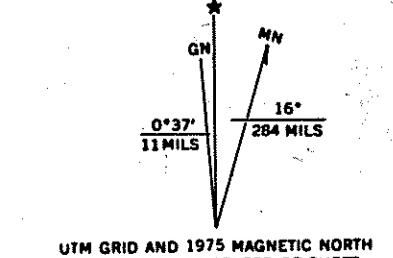
d=inactive, old

123=inventory number
for slope failure

Slope failures
compiled from
original mapping by
Bryant, 1984;
Christenson, 1985;
Crittenden and Sorensen, 1985;
Dames and Moore, 1980, 1984, 1985;
Gill, 1981, 1982;
Kaliser, 1969, 1973, 1976, 1984;
Kappesser, unpublished;
DS 181 Lowe, unpublished;
DS 182
Lund, 1980;
Miller, 1980;
Nelson and Personius,
in preparation;
Ogden City and Weber
County, 1985;
Olsen, 1976, 1981;
Pashley and Wiggins, 1972;
Shroder, 1971;
Utah Department of
Transportation, 1972;
and
Weber County, 1981,
by Mike Lowe,
Weber/Davis Counties
Geologist, 1988.



Mapped, edited, and published by the Geological Survey
Control by USGS and NOS/NOAA
Topography from aerial photographs by multiplex methods
and from planimetric surveys 1926. Aerial photographs
taken 1953 and 1954. Field check 1955
Polyconic projection. 1927 North American datum
10,000-foot grid based on Utah coordinate system, north zone
Red tint indicates areas in which only
landmark buildings are shown
Dashed land lines indicate approximate locations
1000-meter Universal Transverse Mercator grid ticks,
zone 12, shown in blue
Revisions shown in purple compiled from aerial photographs
taken 1969 and 1975. This information not field checked
Purple tint indicates extension of urban areas



OGDEN, UTAH
N4107.5-W1152.5/7.5

THIS MAP COMPLIES WITH NATIONAL MAP ACCURACY STANDARDS
FOR SALE BY U.S. GEOLOGICAL SURVEY, DENVER, COLORADO 80225, OR RESTON, VIRGINIA 22092
A FOLDER DESCRIBING TOPOGRAPHIC MAPS AND SYMBOLS IS AVAILABLE ON REQUEST

1955
PHOTOREVISED 1969 AND 1975
ANS 3688 III NW-SERIES 1987